

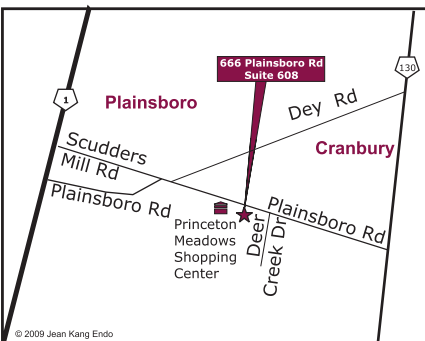
To get to our office:

From Rt-1: Take Route-1 to Scudders Mill Road Exit. Once on Scudders Mill Road, go straight for about 3 miles (8 traffic lights, Scudders Mill Road merges into Plainsboro Road along the way). After passing Princeton Meadows Shopping Center on your right, go to the next traffic light (8th traffic light from Route-1, Scudders Mill Exit), and turn right onto Deer Creek Drive. Make the first right into the parking lot and proceed straight to end of the lot. Bldg. 600 is on the left. Our office is located at Suite 608.

From Princeton/Route 206: Take Nassau Street and turn to Washington Road, heading south. Once you come to intersection with Route-1, turn left onto Route-1 North. Follow directions above.

From Route 130: Turn onto Dey Road, going west. Continue on Dey Road for about 2.5 miles and turn left onto Scotts Corner Road. Scotts Corner Road runs into Plainsboro Road after about 1 mile. Turn right onto Plainsboro Road and go straight for 0.8 miles. At the third light, turn left onto Deer Creek Drive. Make the first right into the parking lot and proceed straight to end of the lot. Bldg. 600 is on the left. Our office is located at Suite 608.

From NJ Turnpike: Take Exit 8A. Go west on Route 32 then take Route 130 south. Follow directions from Route 130 above.



DR. JEAN KANG

American Association of Endodontists
Specialist Member (NJSP #5226)

University of Pennsylvania
Clinical Assistant Professor

Dr. Jean Kang graduated from Columbia University's School of Dental and Oral Surgery in 1997. She completed a General Practice Residency at Albert Einstein Medical Center in Philadelphia before enrolling in the postdoctoral endodontics program at the University of Pennsylvania. While at Penn, Dr. Kang gained expertise in both conventional and surgical endodontics, including the use of an operating microscope to enhance the quality of treatments.

Dr. Kang is a Clinical Assistant Professor at University of Pennsylvania and teaches endodontic residents and dental students. Through this faculty appointment, she keeps abreast of breakthroughs in dental research and technology. Dr. Kang has been practicing evidence-based dentistry in central New Jersey since 2000 and is an active member of American Association of Endodontists, American Dental Association, and New Jersey Dental Association.

Jean Kang, DDS

Jean Kang, DDS Microsurgical Endodontist

666 Plainsboro Rd. Suite 608
Plainsboro, NJ 08536

Phone: (609) 799-7427

Fax: (609) 799-7428

Web: www.jeankangendo.com

Email: jeankangendo@yahoo.com

Microsurgical Endodontist





ABOUT

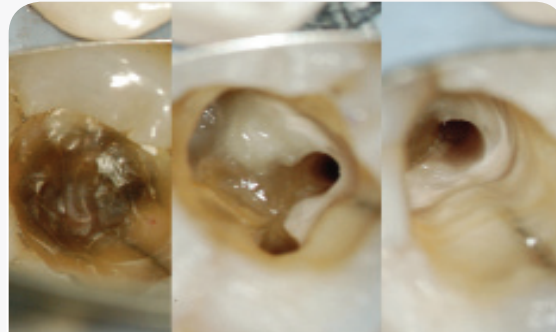
We are a microsurgical endodontic specialty practice dedicated to exceptional care using state-of-the-art technology. We ensure the highest standard of professional care in a friendly, comfortable environment for each patient.

Knowledgeable

Compassionate

Clinically Excellent

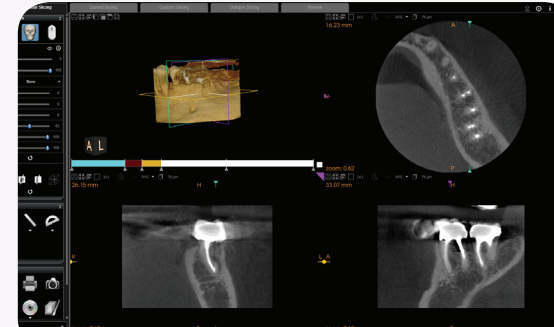
Trustworthy



PROCEDURES

Our practice is equipped to handle even the most sensitive endodontic procedures including:

- Root Canal Therapy
- Retreatment
- Apicoectomy
- Assessment of Cracked Teeth
- Internal Bleaching
- Intentional Replantation



TECHNOLOGIES

We use the latest technology to achieve the best clinical outcome, patient comfort, and information flow with referring dentists.

Clinical Outcome

- 3D cone beam CT
- Operating Microscopes
- Rotary Instrumentation
- Warm Vertical Obturation

Patient Comfort

- Bose Noise Reduction Headphone & iPod
- Nitrous Oxide

Information Flow

- Intraoral Digital Radiography
- Electronic Charts

Jean Kang, DDS Microsurgical Endodontist

666 Plainsboro Rd. Suite 608
Plainsboro, NJ 08536

Phone: (609) 799-7427
Fax: (609) 799-7428
Web: www.jeankangendo.com
Email: jeankangendo@yahoo.com

Introducing/Reintroducing:

Please indicate tooth number(s):

1	2	3	4	5	6	7	8	9	10	11	12	13	14	15	16
32	31	30	29	28	27	26	25	24	23	22	21	20	19	18	17

Remarks:

Post Preparation: Yes No
Place Post and Core: Yes No

Referred By:

Appointment date & time:

